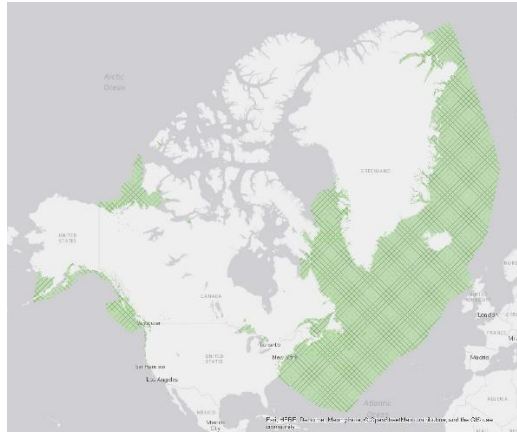


Fisheries and Oceans Canada Aquatic Species at Risk Distribution (Range)

File Geodatabase Feature Class



Tags

Molluscs, Protected species, Science, Endangered species, Fisheries management, Freshwater fish, Salt water fish, Canada, Aquatic animals, Marine mammals, Marine Reptiles, Species at Risk, Distribution

Summary

The Species at Risk (SAR) Program is responsible for carrying out Fisheries and Oceans Canada's (DFO) mandate under the Species at Risk Act (SARA) to protect, recover and conserve all listed aquatic SAR in Canada. As part of this mandate, this spatial database has been developed to identify areas in which aquatic species listed under SARA may be found.

Distribution and range information are identified for species listed as Extirpated, Endangered, Threatened or Special Concern under SARA.

Description

Distribution (range) polygons were assembled by regional SARA biologists using the best available information, including COSEWIC status reports, recovery potential assessments, academic literature, and expert opinion. These spatial data support the protection, recovery and conservation of species listed as Extirpated, Endangered, Threatened or Special Concern under SARA. Species distributions are also described and displayed in Recovery Strategies, Action Plans and/or Management Plans. Discrepancies may exist between the distribution data shown in a species' SARA recovery document and the current spatial data. Please contact DFO for more information on any data discrepancies.

Credits

Fisheries and Oceans Canada - Species at Risk Program

Use limitations

Although DFO and the Species at Risk program strive to provide reliable information and services, we cannot guarantee the services and information will always be available or up-to-date. Please contact info@dfo-mpo.gc.ca if any concerns become apparent. Please also consult <https://www.canada.ca/en/environment-climate-change/services/species-risk-public-registry.html> for more information on specific species.

You are encouraged to use the Information that is available under this licence with only a few conditions: <https://open.canada.ca/en/open-government-licence-canada> .

Extent

West -141.000927 **East** -47.697526
North 76.454302 **South** 40.043423

Scale Range

Maximum (zoomed in) 1:5,000
Minimum (zoomed out) 1:150,000,000

ArcGIS Metadata ►

Topics and Keywords ►

THEMES OR CATEGORIES OF THE RESOURCE oceans, biota, inlandWaters

* CONTENT TYPE Downloadable Data

EXPORT TO FGDC CSDGM XML FORMAT AS RESOURCE DESCRIPTION No

THEME KEYWORDS Molluscs, Protected species, Science, Endangered species, Fisheries management, Freshwater fish, Salt water fish, Canada, Aquatic animals, Marine mammals, Marine reptiles, Species at Risk, Distribution

[Hide Topics and Keywords ▲](#)

Citation ►

TITLE Fisheries and Oceans Canada Aquatic Species at Risk Distribution (Range)

ALTERNATE TITLES DFO Aquatic Species at Risk Critical Habitat and Distribution Geodatabase

CREATION DATE 2017-07-25 00:00:00

PUBLICATION DATE 2017-07-25 00:00:00

EDITION 14

EDITION DATE 2023-02-21

PRESENTATION FORMATS digital map

FGDC GEOSPATIAL PRESENTATION FORMAT vector digital data

COLLECTION TITLE DFO Aquatic Species at Risk Critical Habitat and Distribution Geodatabase

[Hide Citation ▲](#)

Citation Contacts ►

RESPONSIBLE PARTY

INDIVIDUAL'S NAME Fisheries and Oceans Canada

CONTACT'S ROLE point of contact

CONTACT INFORMATION ►

PHONE

VOICE 1-800-465-7735

ADDRESS

TYPE

DELIVERY POINT 200 Kent St Station 13E228

CITY Ottawa

ADMINISTRATIVE AREA Ontario

POSTAL CODE K1A 0E6

COUNTRY CA

E-MAIL ADDRESS info@dfo-mpo.gc.ca

[Hide Contact information ▲](#)

[Hide Citation Contacts ▲](#)

Locales ▶

LOCALE English (CANADA)

LOCALE French (CANADA)

[Hide Locales ▲](#)

Resource Details ▶

DATASET LANGUAGES English (UNITED STATES)

DATASET CHARACTER SET utf8 - 8 bit UCS Transfer Format

SPATIAL REPRESENTATION TYPE vector

SUPPLEMENTAL INFORMATION

This data is standardized to a minimum of 1:50000 (Natural Resources Canada CANVEC data). In certain locations and areas the scale may be less than or greater than 50000 depending on the availability of local data.

* PROCESSING ENVIRONMENT Version 6.2 (Build 9200) ; Esri ArcGIS 10.9.1.28388

CREDITS

Fisheries and Oceans Canada - Species at Risk Program

ARCGIS ITEM PROPERTIES

* NAME DFO_SARA_Dist_2023_FGP_EN

* LOCATION file:///Distribution.gdb

* ACCESS PROTOCOL Local Area Network

[Hide Resource Details ▲](#)

Extents ▶

EXTENT

DESCRIPTION

These data include Canada land mass and ocean areas up to the Exclusive Economic Zone (EEZ).

GEOGRAPHIC EXTENT

BOUNDING RECTANGLE

WEST LONGITUDE -168.984336

EAST LONGITUDE 5.1789

SOUTH LATITUDE 22.514022

NORTH LATITUDE 89.999

EXTENT CONTAINS THE RESOURCE Yes

EXTENT

GEOGRAPHIC EXTENT

BOUNDING RECTANGLE

EXTENT TYPE Extent used for searching

* WEST LONGITUDE -141.000927

* EAST LONGITUDE -47.697526

* NORTH LATITUDE 76.454302

* SOUTH LATITUDE 40.043423

* EXTENT CONTAINS THE RESOURCE Yes

EXTENT IN THE ITEM'S COORDINATE SYSTEM

* WEST LONGITUDE -15696151.372029

* EAST LONGITUDE -5309664.346900

* SOUTH LATITUDE 4872254.326900

* NORTH LATITUDE 13589463.466300

* EXTENT CONTAINS THE RESOURCE Yes

[Hide Extents ▲](#)

Resource Points of Contact ►

POINT OF CONTACT

INDIVIDUAL'S NAME Fisheries and Oceans Canada
CONTACT'S ROLE point of contact

CONTACT INFORMATION ►

PHONE

VOICE 1-800-465-7735

ADDRESS

TYPE

DELIVERY POINT 200 Kent St Station 13E228

CITY Ottawa

ADMINISTRATIVE AREA Ontario

POSTAL CODE K1A 0E6

COUNTRY CA

E-MAIL ADDRESS info@dfo-mpo.gc.ca

[Hide Contact information ▲](#)

[Hide Resource Points of Contact ▲](#)

Resource Maintenance ►

RESOURCE MAINTENANCE

DATE OF NEXT UPDATE 2023-04-28 00:00:00

UPDATE FREQUENCY as needed

SCOPE OF THE UPDATES dataset

[Hide Resource Maintenance ▲](#)

Resource Constraints ►

LEGAL CONSTRAINTS

LIMITATIONS OF USE

The information presented in this layer may not be current and/or may be incorrect or missing information. Areas where no fish species or fish habitat (as defined by the Fisheries Act) are depicted on the map should not be construed as having no value for fish or fish habitat. Under no circumstances will the Government of Canada be liable to any person or business entity for any direct, indirect, special, incidental, consequential, or other damages based on any use of this dataset including, without limitation, any lost profits, business interruption, or loss of programs or information.

USE CONSTRAINTS distributor license agreement

CONSTRAINTS

LIMITATIONS OF USE

Although DFO and the Species at Risk program strive to provide reliable information and services, we cannot guarantee the services and information will always be available or up-to-date. Please contact info@dfo-mpo.gc.ca if any concerns become apparent. Please also consult <https://www.canada.ca/en/environment-climate-change/services/species-risk-public-registry.html> for more information on specific species.

You are encouraged to use the Information that is available under this licence with only a few conditions: <https://open.canada.ca/en/open-government-licence-canada> .

[Hide Resource Constraints ▲](#)

Spatial Reference ►

ARCGIS COORDINATE SYSTEM

- * TYPE Projected
- * GEOGRAPHIC COORDINATE REFERENCE GCS_WGS_1984
- * PROJECTION WGS_1984_Web_Mercator_Auxiliary_Sphere
- * COORDINATE REFERENCE DETAILS

PROJECTED COORDINATE SYSTEM

WELL-KNOWN IDENTIFIER 102100

X ORIGIN -20037700

Y ORIGIN -30241100

XY SCALE 10000

Z ORIGIN -100000

Z SCALE 10000

M ORIGIN -100000

M SCALE 10000

XY TOLERANCE 0.001

Z TOLERANCE 0.001

M TOLERANCE 0.001

HIGH PRECISION true

LATEST WELL-KNOWN IDENTIFIER 3857

WELL-KNOWN TEXT

PROJCS["WGS_1984_Web_Mercator_Auxiliary_Sphere",GEOGCS["GCS_WGS_1984",DATUM["D_WGS_1984",SPHEROID["WGS_1984",6378137.0,298.257223563]],PRIMEM["Greenwich",0.0],UNIT["Degree",0.0174532925199433]],PROJECTION["Mercator_Auxiliary_Sphere"],PARAMETER["False_Easting",0.0],PARAMETER["False_Northing",0.0],PARAMETER["Central_Meridian",0.0],PARAMETER["Standard_Parallel_1",0.0],PARAMETER["Auxiliary_Sphere_Type",0.0],UNIT["Meter",1.0],AUTHORITY["EPSG",3857]]

REFERENCE SYSTEM IDENTIFIER

DIMENSION horizontal

VALUE 4269

* CODESPACE EPSG

* VERSION 6.18.3(9.3.1.2)

[Hide Spatial Reference ▲](#)

Spatial Data Properties ►

VECTOR ►

- * LEVEL OF TOPOLOGY FOR THIS DATASET geometry only

GEOMETRIC OBJECTS

FEATURE CLASS NAME DFO_SARA_Dist_2023_FGP_EN

* OBJECT TYPE composite

* OBJECT COUNT 221499

[Hide Vector ▲](#)

ARCGIS FEATURE CLASS PROPERTIES ►

FEATURE CLASS NAME DFO_SARA_Dist_2023_FGP_EN

* FEATURE TYPE Simple

* GEOMETRY TYPE Polygon

* HAS TOPOLOGY FALSE

* FEATURE COUNT 221499

* SPATIAL INDEX TRUE
* LINEAR REFERENCING FALSE

[Hide ArcGIS Feature Class Properties ▲](#)

[Hide Spatial Data Properties ▲](#)

Data Quality ►

SCOPE OF QUALITY INFORMATION ►

RESOURCE LEVEL dataset

[Hide Scope of quality information ▲](#)

DATA QUALITY REPORT - COMPLETENESS OMISSION ►

MEASURE DESCRIPTION

Distribution for Bull Trout, South Coast British Columbia (special concern) is not currently available.

Access to information restraints prevents exact distribution for certain species to be published. This dataset is complete as of February 2023. Data updates and new species additions will be incorporated within the dataset according to the maintenance schedule.

EVALUATION TYPE direct internal

EVALUATION METHOD

This dataset includes distribution or range that is based on known (occurrence-based) data and/or potential (e.g. modelled) data for each species.

Spatial data was derived from COSEWIC, Recovery Potential Assessment reports, other species documents and scientific data. The best available data was used for each species; however, the state of data differed across species. All data was reviewed and validated by species experts and DFO SAR biologists.

CONFORMANCE TEST RESULTS

TEST PASSED Yes

RESULT EXPLANATION

Data sources are (at minimum quality) digitized from the Recovery documents or COSEWIC reports. When possible, the data was improved by using 1:50k (or better) water lines and waterbodies (Natural Resources Data CANVEC). Data provided as lines (e.g. rivers) have been buffered by 2.5 metres. Data provided are broken into pieces for better display

PRODUCT SPECIFICATION ►

TITLE Data Complete

REVISION DATE 2023-02-21 00:00:00

[Hide Product specification ▲](#)

[Hide Data quality report - Completeness omission ▲](#)

[Hide Data Quality ▲](#)

Lineage ►

LINEAGE STATEMENT

Developed from data collected from regional points of contact and formatted to meet nationally accepted standards.

[Hide Lineage ▲](#)

Distribution ►

DISTRIBUTION FORMAT

* NAME File Geodatabase Feature Class

VERSION 1.0

FORMAT INFORMATION CONTENT ArcSDE

[Hide Distribution ▲](#)

Fields ►

DETAILS FOR OBJECT DFO_SARA_Dist_2023_FGP_EN ►

TYPE Feature Class.

ROW COUNT 221499

DEFINITION

empty

DEFINITION SOURCE

DFO

FIELD OBJECTID ►

* ALIAS OBJECTID

* DATA TYPE OID

* WIDTH 4

* PRECISION 0

* SCALE 0

* FIELD DESCRIPTION

Internal feature number.

* DESCRIPTION SOURCE

Esri

* DESCRIPTION OF VALUES

Sequential unique whole numbers that are automatically generated.

[Hide Field OBJECTID ▲](#)

FIELD Shape ►

* ALIAS Shape

* DATA TYPE Geometry

* WIDTH 0

* PRECISION 0

* SCALE 0

* FIELD DESCRIPTION

Feature geometry.

* DESCRIPTION SOURCE

Esri

* DESCRIPTION OF VALUES

Coordinates defining the features.

Hide Field Shape ▲

FIELD [Common_Name_EN ▶](#)

* ALIAS Common Name EN

* DATA TYPE String

* WIDTH 255

* PRECISION 0

* SCALE 0

FIELD DESCRIPTION

Species Common Name – English.

DESCRIPTION SOURCE

DFO

Hide Field Common_Name_EN ▲

FIELD [Population_EN ▶](#)

* ALIAS Population EN

* DATA TYPE String

* WIDTH 255

* PRECISION 0

* SCALE 0

FIELD DESCRIPTION

Species Population - English. As recommended for listing by COSEWIC.

DESCRIPTION SOURCE

DFO, COSEWIC

Hide Field Population_EN ▲

FIELD [Common_Name_FR ▶](#)

* ALIAS Common Name FR

* DATA TYPE String

* WIDTH 255

* PRECISION 0

* SCALE 0

FIELD DESCRIPTION

Species Common Name - French.

DESCRIPTION SOURCE

DFO

Hide Field Common_Name_FR ▲

FIELD Population_FR ►

- * ALIAS Population FR
- * DATA TYPE String
- * WIDTH 255
- * PRECISION 0
- * SCALE 0

FIELD DESCRIPTION

Species Population - French. As recommended for listing by COSEWIC.

DESCRIPTION SOURCE

DFO, COSEWIC

Hide Field Population_FR ▲

FIELD Scientific_Name ►

- * ALIAS Scientific Name
- * DATA TYPE String
- * WIDTH 255
- * PRECISION 0
- * SCALE 0

FIELD DESCRIPTION

Scientific name for species.

DESCRIPTION SOURCE

COSEWIC

Hide Field Scientific_Name ▲

FIELD Taxon ►

- * ALIAS Taxon
- * DATA TYPE String
- * WIDTH 255
- * PRECISION 0
- * SCALE 0

FIELD DESCRIPTION

Species Class.

DESCRIPTION SOURCE

DFO

DESCRIPTION OF VALUES

Fishes
Molluscs
Mammals
Reptiles

Hide Field Taxon ▲

FIELD [Eco_Type](#) ▶

- * ALIAS Ecology Type
- * DATA TYPE String
- * WIDTH 255
- * PRECISION 0
- * SCALE 0

FIELD DESCRIPTION

General habitat description

DESCRIPTION SOURCE

DFO

DESCRIPTION OF VALUES

Anadromous
Freshwater
Marine

[Hide Field Eco_Type](#) ▲

FIELD [Waterbody](#) ▶

- * ALIAS Waterbody
- * DATA TYPE String
- * WIDTH 255
- * PRECISION 0
- * SCALE 0

FIELD DESCRIPTION

Waterbody Name in which the Distribution is identified.

DESCRIPTION SOURCE

Recovery Strategy, Critical Habitat Order, Action Plan, Management Plan

[Hide Field Waterbody](#) ▲

FIELD [SARA_Status](#) ▶

- * ALIAS SARA Status
- * DATA TYPE String
- * WIDTH 255
- * PRECISION 0
- * SCALE 0

FIELD DESCRIPTION

Status of species as listed by Species at Risk Act (SARA Schedule 1).

DESCRIPTION SOURCE

Species at Risk Act

DESCRIPTION OF VALUES

Extirpated (EXT): A wildlife species that no longer exists in the wild in Canada, but exists elsewhere.

Endangered (END): A wildlife species facing imminent extirpation or extinction.
Threatened (THR): A wildlife species that is likely to become an endangered if nothing is done to reverse the factors leading to its extirpation or extinction.
Special Concern (SC): A wildlife species that may become threatened or endangered because of a combination of biological characteristics and identified threats.

[Hide Field SARA_Status ▲](#)

FIELD Lead_Region ►

- * ALIAS Lead Region
- * DATA TYPE String
- * WIDTH 255
- * PRECISION 0
- * SCALE 0

FIELD DESCRIPTION

Lead DFO Region for species and/or population management.

DESCRIPTION SOURCE

DFO

DESCRIPTION OF VALUES

Central and Arctic
Gulf
Maritimes
Newfoundland and Labrador
Pacific
Quebec

[Hide Field Lead_Region ▲](#)

FIELD Support_Region ►

- * ALIAS Support Region
- * DATA TYPE String
- * WIDTH 255
- * PRECISION 0
- * SCALE 0

FIELD DESCRIPTION

Region(s) providing support to Lead Region for species' management.

DESCRIPTION SOURCE

DFO

DESCRIPTION OF VALUES

Central and Arctic
Gulf
Maritimes
Newfoundland and Labrador
Pacific
Quebec

[Hide Field Support_Region ▲](#)

FIELD [Data_Source ▶](#)

- * ALIAS Data Source
- * DATA TYPE String
- * WIDTH 255
- * PRECISION 0
- * SCALE 0

FIELD DESCRIPTION

Detail regarding the primary source of the data.

DESCRIPTION SOURCE

DFO

[Hide Field Data_Source ▲](#)

FIELD [Species_Link ▶](#)

- * ALIAS Species Link
- * DATA TYPE String
- * WIDTH 255
- * PRECISION 0
- * SCALE 0

FIELD DESCRIPTION

Hyperlink to species' profile on Species at Risk Public Registry.

DESCRIPTION SOURCE

SARA Registry

[Hide Field Species_Link ▲](#)

FIELD [Shape_Length ▶](#)

- * ALIAS Shape_Length
- * DATA TYPE Double
- * WIDTH 8
- * PRECISION 0
- * SCALE 0
- * FIELD DESCRIPTION

Length of feature in internal units.

* DESCRIPTION SOURCE

Esri

* DESCRIPTION OF VALUES

Positive real numbers that are automatically generated.

[Hide Field Shape_Length ▲](#)

FIELD Shape_Area ▶

- * ALIAS Shape_Area
- * DATA TYPE Double
- * WIDTH 8
- * PRECISION 0
- * SCALE 0
- * FIELD DESCRIPTION
Area of feature in internal units squared.

- * DESCRIPTION SOURCE
Esri

- * DESCRIPTION OF VALUES
Positive real numbers that are automatically generated.

[Hide Field Shape_Area ▲](#)

[Hide Details for object DFO_SARA_Dist_2023_FGP_EN ▲](#)

[Hide Fields ▲](#)

Metadata Details ▶

METADATA LANGUAGE English (UNITED STATES)
METADATA CHARACTER SET utf8 - 8 bit UCS Transfer Format
METADATA IDENTIFIER AD87CCA3-5CFB-4395-A82E-7464BB040117
FUNCTION OF THE RESOURCE download
SCOPE OF THE DATA DESCRIBED BY THE METADATA dataset
SCOPE NAME * dataset
LAST UPDATE 2023-02-21
ARCGIS METADATA PROPERTIES
METADATA FORMAT ArcGIS 1.0
STANDARD OR PROFILE USED TO EDIT METADATA NAP
METADATA STYLE North American Profile of ISO19115 2003
CREATED IN ARCGIS FOR THE ITEM 2023-02-21 10:42:22
LAST MODIFIED IN ARCGIS FOR THE ITEM 2023-02-21 08:52:17
AUTOMATIC UPDATES
HAVE BEEN PERFORMED Yes
LAST UPDATE 2023-02-21 08:52:17

[Hide Metadata Details ▲](#)

Metadata Contacts ▶

METADATA CONTACT
INDIVIDUAL'S NAME Fisheries and Oceans Canada
CONTACT'S ROLE point of contact

CONTACT INFORMATION ▶

PHONE
VOICE 1-800-465-7735

ADDRESS

TYPE

DELIVERY POINT 200 Kent St Station 13E228

CITY Ottawa

ADMINISTRATIVE AREA Ontario

POSTAL CODE K1A 0E6

COUNTRY CA

E-MAIL ADDRESS info@dfo-mpo.gc.ca

Hide Contact information ▲

Hide Metadata Contacts ▲

Metadata Maintenance ►

MAINTENANCE

DATE OF NEXT UPDATE 2023-04-28 00:00:00

UPDATE FREQUENCY as needed

Hide Metadata Maintenance ▲

Metadata Constraints ►

LEGAL CONSTRAINTS

LIMITATIONS OF USE

No general constraints or use limitations.

You are encouraged to use the information that is available under this licence with only a few conditions:

<https://open.canada.ca/en/open-government-licence-canada>

USE CONSTRAINTS distributor license agreement

Hide Metadata Constraints ▲

Thumbnail and Enclosures ►

THUMBNAIL

THUMBNAIL TYPE JPG

Hide Thumbnail and Enclosures ▲