

CSAS 2020/071 Figure 17

Terms of Use

As a courtesy to fellow scientists, please e-mail Dr. Catherine Johnson (Catherine.Johnson@dfo-mpo.gc.ca) to indicate how you are using these data so that efforts are not duplicated. Comments and suggestions are also welcome.

The data provided here can be redistributed and/or modified under the terms of the Government of Canada Open Data License Agreement as published on <http://open.canada.ca/en/open-government-licence-canada> in its current version, or any subsequent version.

The data are licensed “as is”. Fisheries and Oceans Canada makes no representation and gives no warranty whatsoever with respect to the data and expressly disclaims any implied warranty of merchantability or fitness for a particular purpose of the data. Fisheries and Oceans Canada assumes no obligation or liability whatsoever for the provision of updates to the Data. See the Government of Canada Open Data License Agreement at <http://open.canada.ca/en/open-government-licence-canada> for details.

Citation

It is suggested that data users cite the DFO Canadian Science Advisory Secretariat (CSAS) research documents as specified within the “Foreword” of the associated report body:

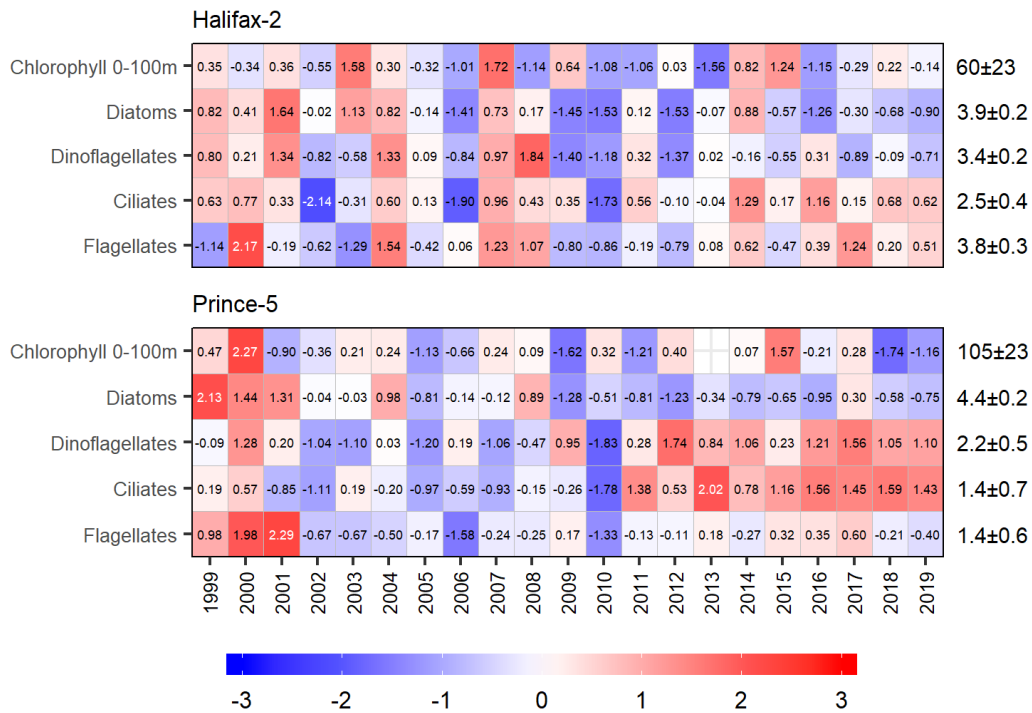
Casault, B., Johnson, C., Devred, E., Head, E., Cogswell, A., and Spry, J. 2020. Optical, Chemical, and Biological Oceanographic Conditions on the Scotian Shelf and in the Eastern Gulf of Maine during 2019. DFO Can. Sci. Advis. Sec. Res. Doc. 2020/xxx. vi + 64 p.

Contact

For questions concerning the data provided, please contact:

Dr. Catherine Johnson
Fisheries and Oceans Canada
Bedford Institute of Oceanography
P.O. Box 1006, 1 Challenger Dr.
Dartmouth, N.S. Canada B2Y 4A2
Tel: 902-426-0753
Email: Catherine.Johnson@dfo-mpo.gc.ca

Figure



Annual anomaly scorecard for chlorophyll *a* inventory (0-100 m at Halifax-2, 0-95 m at Prince-5) and microplankton abundance at the Maritimes high frequency sampling stations. Values in each cell are anomalies from the mean for the reference period, 1999-2015, in standard deviation (sd) units (mean and sd listed at right). Red (blue) cells indicate higher- (lower-) than-normal chlorophyll *a* inventories or microplankton abundances.

Data

Annual means time series

The integrated chlorophyll and microplankton abundance annual means data used to plot Figure 17 are available [here](#).

Climatology

The integrated chlorophyll and microplankton abundance climatology data used to plot Figure 17 are available here [here](#).

Annual anomalies time series

The anomalies of integrated chlorophyll and microplankton abundance data used to plot Figure 17 are available [here](#).