

## Terms of Use

As a courtesy to fellow scientists, please e-mail Dr. Catherine Johnson ([Catherine.Johnson@dfo-mpo.gc.ca](mailto:Catherine.Johnson@dfo-mpo.gc.ca)) to indicate how you are using these data so that efforts are not duplicated. Comments and suggestions are also welcome.

The data provided here can be redistributed and/or modified under the terms of the Government of Canada Open Data License Agreement as published on <http://open.canada.ca/en/open-government-licence-canada> in its current version, or any subsequent version.

The data are licensed “as is”. Fisheries and Oceans Canada makes no representation and gives no warranty whatsoever with respect to the data and expressly disclaims any implied warranty of merchantability or fitness for a particular purpose of the data. Fisheries and Oceans Canada assumes no obligation or liability whatsoever for the provision of updates to the Data. See the Government of Canada Open Data License Agreement at <http://open.canada.ca/en/open-government-licence-canada> for details.

## Citation

It is suggested that data users cite the DFO Canadian Science Advisory Secretariat (CSAS) research documents as specified within the “Foreword” of the associated report body:

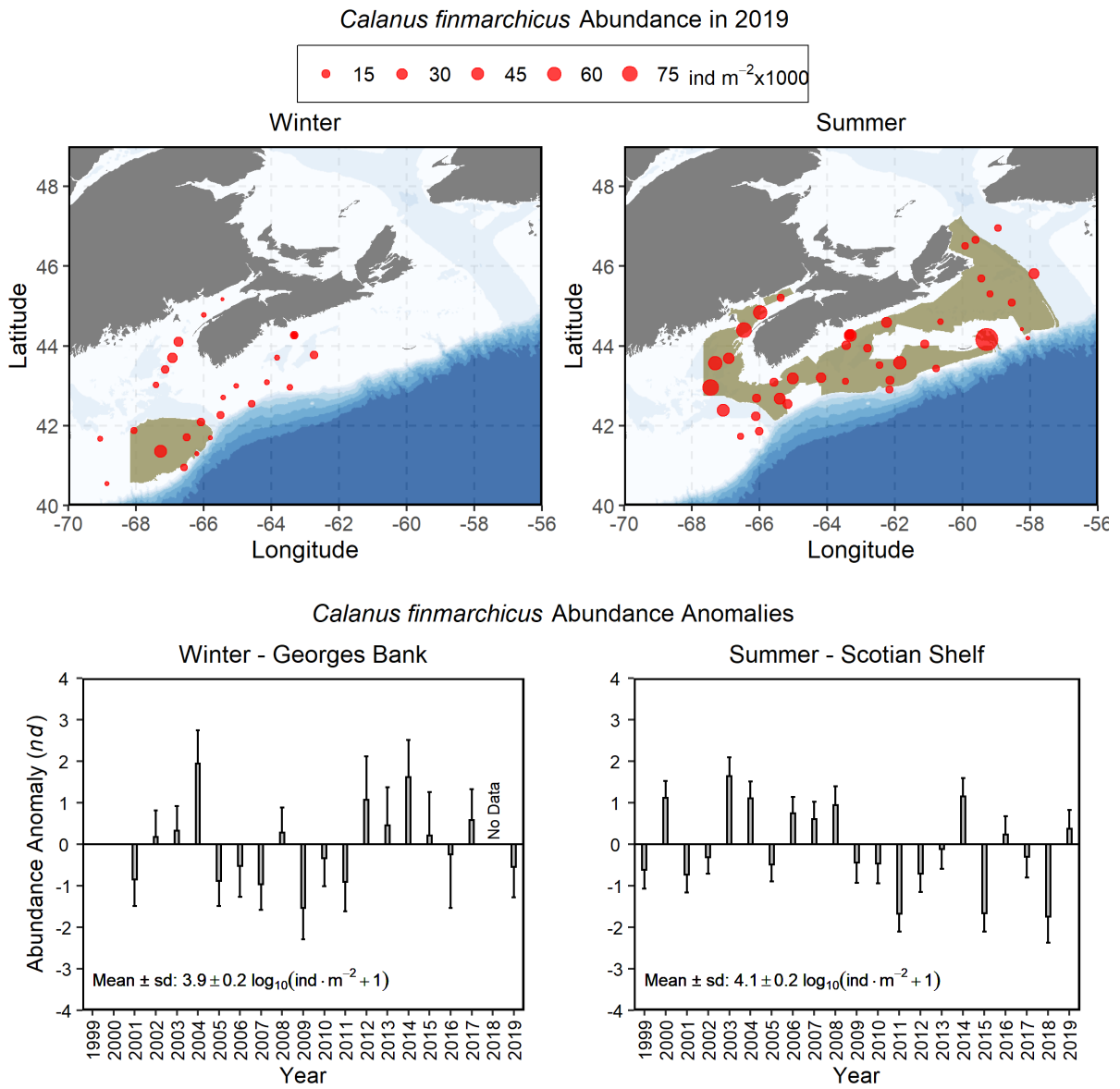
Casault, B., Johnson, C., Devred, E., Head, E., Cogswell, A., and Spry, J. 2020. Optical, Chemical, and Biological Oceanographic Conditions on the Scotian Shelf and in the Eastern Gulf of Maine during 2019. DFO Can. Sci. Advis. Sec. Res. Doc. 2020/xxx. vi + 64 p.

## Contact

For questions concerning the data provided, please contact:

Dr. Catherine Johnson  
Fisheries and Oceans Canada  
Bedford Institute of Oceanography  
P.O. Box 1006, 1 Challenger Dr.  
Dartmouth, N.S. Canada B2Y 4A2  
Tel: 902-426-0753  
Email: [Catherine.Johnson@dfo-mpo.gc.ca](mailto:Catherine.Johnson@dfo-mpo.gc.ca)

# Figure



Spatial distribution of *Calanus finmarchicus* abundance in 2019 (upper panels) and time series of *Calanus finmarchicus* abundance anomalies (lower panels) from ecosystem trawl surveys on Georges Bank (winter) and the Scotian Shelf and eastern Gulf of Maine (summer), 1999-2019. Vertical lines in lower panels represent standard errors.

## Data

### 2019 Data

The 2019 *Calanus finmarchicus* abundance data used to plot Figure 29 are available [here](#).

### Seasonal means time series

The *Calanus finmarchicus* abundance seasonal means data used to plot Figure 29 are available [here](#).

### Climatology

The *Calanus finmarchicus* abundance seasonal climatology data used to plot Figure 29 are available here [here](#).

### Seasonal anomalies time series

The *Calanus finmarchicus* abundance seasonal anomalies data used to plot Figure 29 are available [here](#).