

## Terms of Use

As a courtesy to fellow scientists, please e-mail Dr. Catherine Johnson ([Catherine.Johnson@dfo-mpo.gc.ca](mailto:Catherine.Johnson@dfo-mpo.gc.ca)) to indicate how you are using these data so that efforts are not duplicated. Comments and suggestions are also welcome.

The data provided here can be redistributed and/or modified under the terms of the Government of Canada Open Data License Agreement as published on <http://open.canada.ca/en/open-government-licence-canada> in its current version, or any subsequent version.

The data are licensed “as is”. Fisheries and Oceans Canada makes no representation and gives no warranty whatsoever with respect to the data and expressly disclaims any implied warranty of merchantability or fitness for a particular purpose of the data. Fisheries and Oceans Canada assumes no obligation or liability whatsoever for the provision of updates to the Data. See the Government of Canada Open Data License Agreement at <http://open.canada.ca/en/open-government-licence-canada> for details.

## Citation

It is suggested that data users cite the DFO Canadian Science Advisory Secretariat (CSAS) research documents as specified within the “Foreword” of the associated report body:

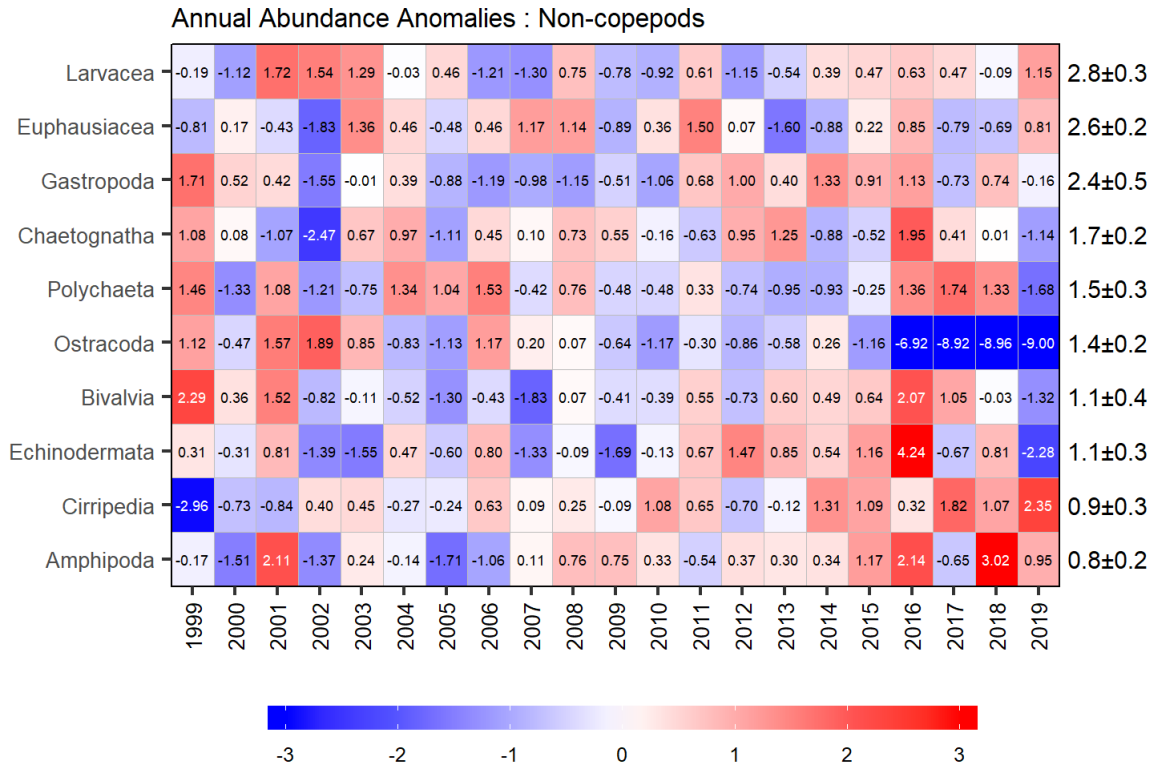
Casault, B., Johnson, C., Devred, E., Head, E., Cogswell, A., and Spry, J. 2020. Optical, Chemical, and Biological Oceanographic Conditions on the Scotian Shelf and in the Eastern Gulf of Maine during 2019. DFO Can. Sci. Advis. Sec. Res. Doc. 2020/xxx. vi + 64 p.

## Contact

For questions concerning the data provided, please contact:

Dr. Catherine Johnson  
Fisheries and Oceans Canada  
Bedford Institute of Oceanography  
P.O. Box 1006, 1 Challenger Dr.  
Dartmouth, N.S. Canada B2Y 4A2  
Tel: 902-426-0753  
Email: [Catherine.Johnson@dfo-mpo.gc.ca](mailto:Catherine.Johnson@dfo-mpo.gc.ca)

# Figure



Annual anomaly scorecard for non-copepod group abundances on the Scotian Shelf sections, ordered from higher to lower abundance groups. Values in each cell are anomalies from the mean for the reference period, 1999-2015, in standard deviation (sd) units (mean and sd listed at right). A grey cell indicates missing data. Red (blue) cells indicate higher (lower) than normal abundance levels.

## **Data**

### **Annual means time series**

The non-copepod groups abundance annual means data used to plot Figure 30 are available [here](#).

### **Climatology**

The non-copepod groups abundance climatology data used to plot Figure 30 are available here [here](#).

### **Annual anomalies time series**

The anomalies of non-copepod groups abundance data used to plot Figure 30 are available [here](#).