

CSAS 2020/071 Figure 8

Terms of Use

As a courtesy to fellow scientists, please e-mail Dr. Catherine Johnson (Catherine.Johnson@dfo-mpo.gc.ca) to indicate how you are using these data so that efforts are not duplicated. Comments and suggestions are also welcome.

The data provided here can be redistributed and/or modified under the terms of the Government of Canada Open Data License Agreement as published on <http://open.canada.ca/en/open-government-licence-canada> in its current version, or any subsequent version.

The data are licensed “as is”. Fisheries and Oceans Canada makes no representation and gives no warranty whatsoever with respect to the data and expressly disclaims any implied warranty of merchantability or fitness for a particular purpose of the data. Fisheries and Oceans Canada assumes no obligation or liability whatsoever for the provision of updates to the Data. See the Government of Canada Open Data License Agreement at <http://open.canada.ca/en/open-government-licence-canada> for details.

Citation

It is suggested that data users cite the DFO Canadian Science Advisory Secretariat (CSAS) research documents as specified within the “Foreword” of the associated report body:

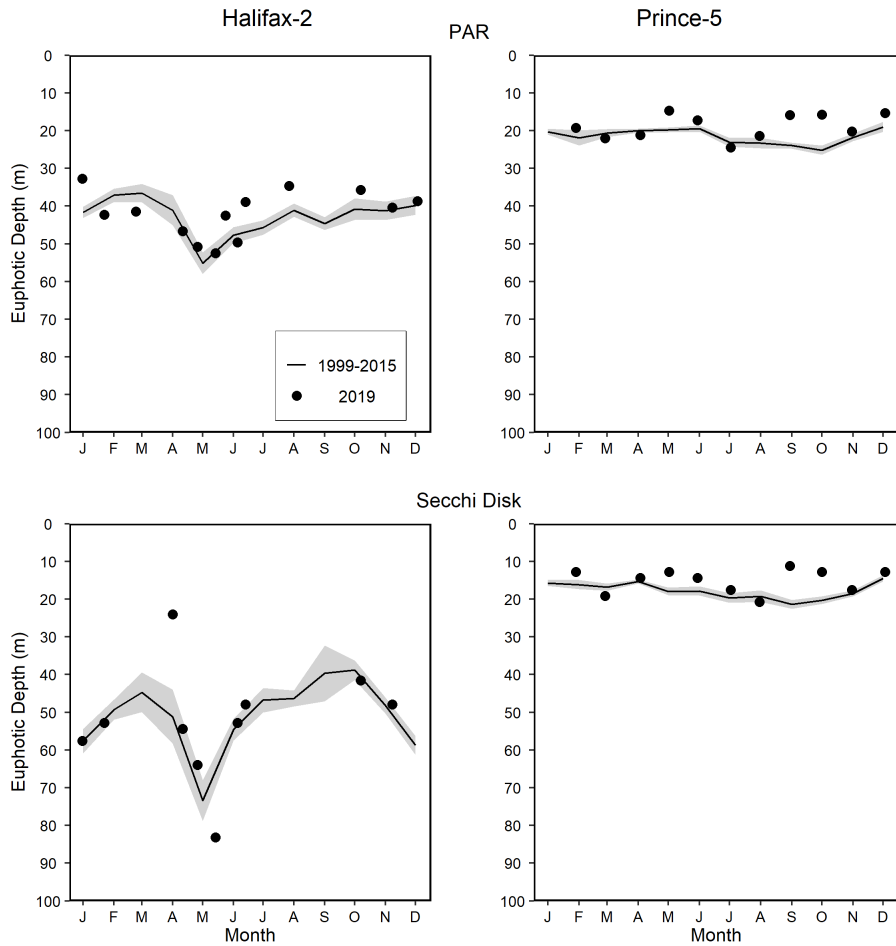
Casault, B., Johnson, C., Devred, E., Head, E., Cogswell, A., and Spry, J. 2020. Optical, Chemical, and Biological Oceanographic Conditions on the Scotian Shelf and in the Eastern Gulf of Maine during 2019. DFO Can. Sci. Advis. Sec. Res. Doc. 2020/xxx. vi + 64 p.

Contact

For questions concerning the data provided, please contact:

Dr. Catherine Johnson
Fisheries and Oceans Canada
Bedford Institute of Oceanography
P.O. Box 1006, 1 Challenger Dr.
Dartmouth, N.S. Canada B2Y 4A2
Tel: 902-426-0753
Email: Catherine.Johnson@dfo-mpo.gc.ca

Figure



Optical properties (euphotic depth from PAR irradiance meter and Secchi disc) at the Maritimes high frequency sampling stations. Year 2019 data (solid circle) compared with mean conditions from 1999-2015 (solid line), except 2001-2015 for euphotic depth from PAR at Prince-5. The gray shaded area represents the standard error of the monthly means. Tick marks on the horizontal axes indicate the 15th day of the month.

Data

Time series

The PAR- and Secchi-based euphotic depth data used to plot Figure 8 are available here for [HL2](#) and [P5](#) fixed stations.

Climatology

The PAR- and Secchi-based euphotic depth climatology data used to plot Figure 8 are available here for [HL2](#) and [P5](#) fixed stations.